

NEW  
UPGRADED  
TECHNOLOGY!

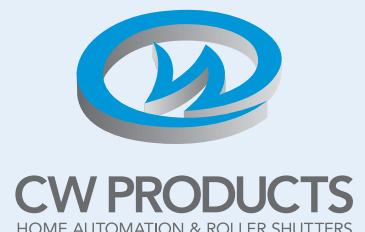
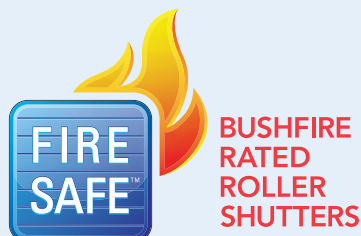


# Protect Your Home And Family With FireSafe™ Bushfire Rated Roller Shutters!



## The NEW FireSafe™ Roller Shutter:

- Bushfire rated to Bushfire Attack Level (BAL) A40.
- Tested by CSIRO (Report# FSZ1379).
- Complies with Australian Bushfire Construction Standard AS3959-2009 (Clauses 3.7 & 8.5.1).
- Radiant heat shielding properties to 40 kW/m<sup>2</sup>.
- Fully extruded strong aluminium alloy shutters.
- Commercial grade double wall extruded profile.
- Suitable for large span windows & doors.
- Protects windows from flying debris & extreme heat radiation.
- Choice of profile colours.
- Manual or motorised operation with remote control options.
- Made in Australia.



# Protect Your Home! Protect Your Family!

As more and more Australians move to country and semi-rural areas for a better lifestyle, and our urban sprawl takes homeowners closer to bushfire prone, wooded and high vegetation areas, protection from bushfires has become increasingly important in Australia.

Add to that the ongoing devastation of bushfires in many states across the country, and it becomes vital that we help protect Australian families and their homes from bushfires.

Aside from the obvious and growing need for bushfire protection, a new **Australian Bushfire Construction Standard AS3959-2009** has been implemented, detailing minimum standards for building and construction in bushfire areas.

This new standard is now mandatory in some states of Australia.

It is for these reasons that CW Products, (Australia's leading supplier of roller shutters and home automation products) has developed the **FireSafe™ Bushfire Rated Roller Shutter**.

At CW Products we're committed to helping protect Australian families and their homes!



## Scientifically Tested!

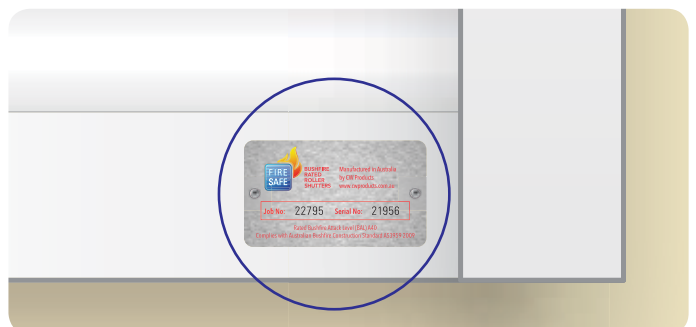
The **FireSafe™ Bushfire Rated Roller Shutter** has been tested by the **CSIRO** at their testing facility (Report# FSZ1379) achieving a Bushfire Attack Level (BAL) of A40 when fully closed.

Exposed to a radiant heat as severe as 40 kW/m<sup>2</sup>, to simulate bushfire attack, **FireSafe™** has been successful in all its performance testing, and complies with **AS3959-2009** (Clauses 3.7 & 8.5.1).

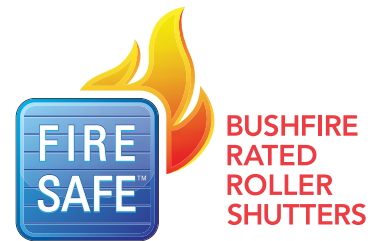


## FireSafe™ Authentication Plate

All **FireSafe™** shutters are fitted with an Authentication Plate with Serial Number to ensure genuine product and product performance that meets Australian Standards.

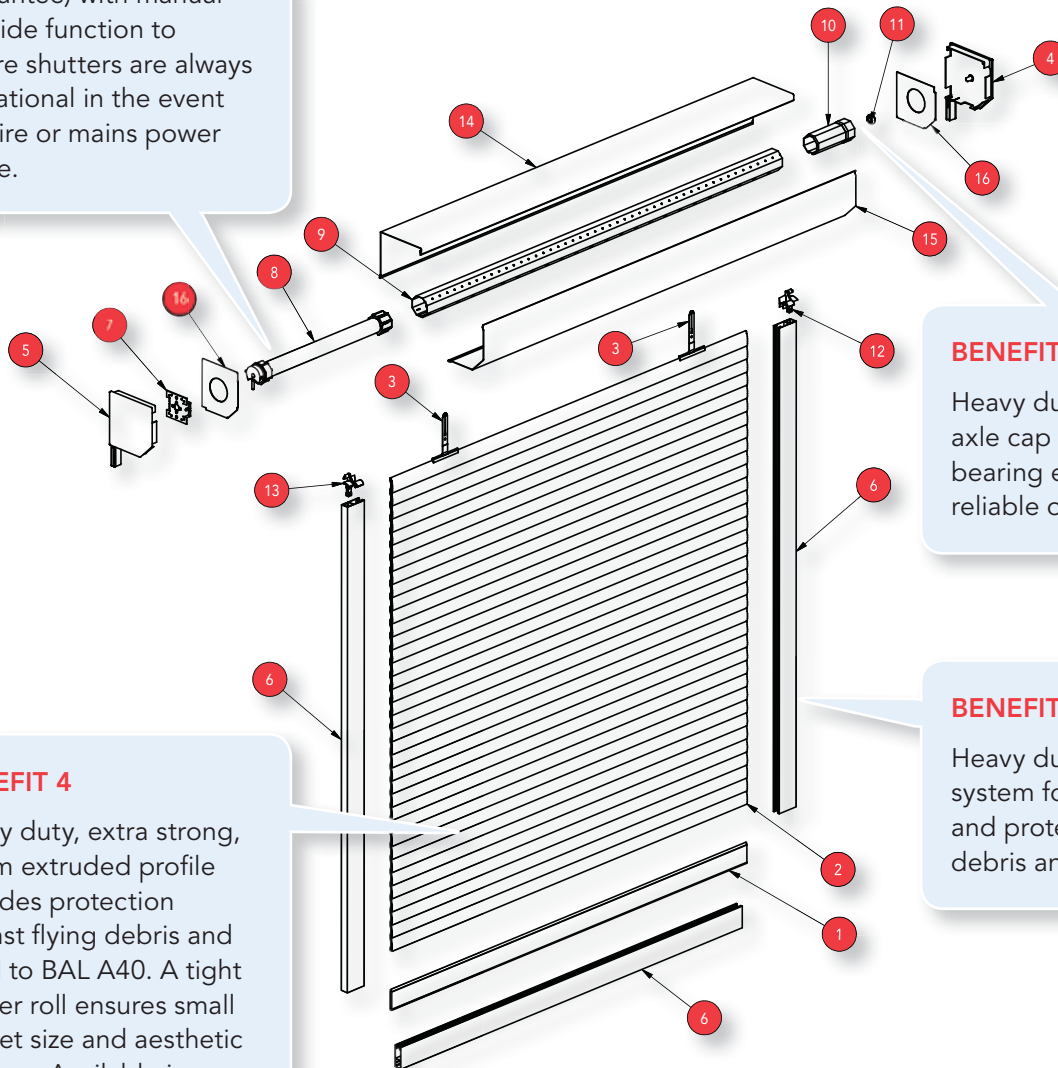


# The FireSafe™ Design At A Glance!



## BENEFIT 1

High quality motorisation options available (5 Year Guarantee) with manual override function to ensure shutters are always operational in the event of a fire or mains power failure.



## BENEFIT 2

Heavy duty aluminium axle cap and sealed bearing ensure years of reliable operation.

## BENEFIT 3

Heavy duty 68mm guide system for extra strength and protection from flying debris and fire.

## BENEFIT 4

Heavy duty, extra strong, 36mm extruded profile provides protection against flying debris and rated to BAL A40. A tight shutter roll ensures small pelmet size and aesthetic features. Available in a choice of profile colours.

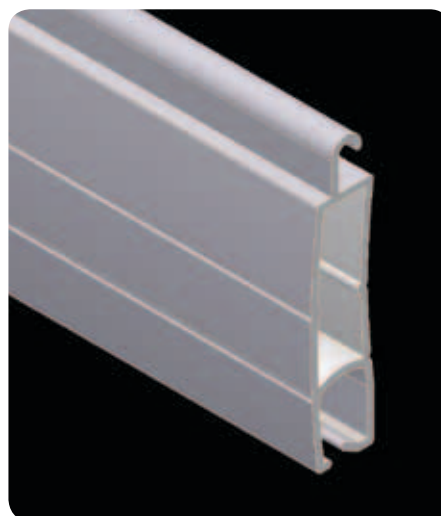
1	Heavy Duty Bottom Bar
2	Extruded Roller Shutter Profile
3	Security Springs
4	RH Side Pelmet Side Frame
5	LH Side Pelmet Side Frame
6	Heavy Duty Extruded Guide
7	Tubular Motor Bracket
8	Tubular Motor With Crown & Driving Wheel

9	Octagonal 60mm or 70mm Axle
10	Aluminium End Cap
11	Sealed Bearing
12	RH Entry Guide
13	LH Entry Guide
14	Pelmet Back
15	Pelmet Cover
16	Safety Plate



# FireSafe™ Technical Specifications

<b>Bushfire Attack Level Rating</b>	BAL A40
<b>Maximum Shutter Width</b>	4000mm
<b>Maximum Shutter Height</b>	3200mm
<b>Maximum Surface Area</b>	12m <sup>2</sup>
<b>Number Of Slats/Metre</b>	28
<b>Profile Slat Covering</b>	36mm
<b>Profile Slat Thickness</b>	9.7mm
<b>Axle Types</b>	Octagonal Steel
<b>Bottom Bar Dimensions</b>	55mm x 8.5mm
<b>Guide Dimensions</b>	68mm x 25mm/14mm (Heavy Duty Guide)
<b>Paint Finish</b>	High Quality Powder Coat



## Colour Options



## Manual Or Motorised Control Options



Steel Cable Winder  
(Up To 50Kg)



Wall Switch  
With 240V Electric  
Manual Override  
Motor



Remote Control  
With 240V Electric  
SIMU Hz Manual  
Override Motor



Crank Handle  
With 240V Electric  
Manual Override  
Motor

For more information on the FireSafe™ Bushfire Rated Roller Shutter, please contact your nearest dealer, installer or visit [www.cwproducts.com.au](http://www.cwproducts.com.au)

Authorised Dealer:

**CASEY SCREENS & SHUTTERS**  
Phone 8790 1462

Illustrations, photos and colours shown in this brochure are for illustrative purposes only. All technical specifications and dimensions are correct at time of printing and may change without notice. Profile technical specifications and shutter performance may vary in certain applications, eg. wide applications with no solid structure behind the roller shutter. For more information please contact your CW Products representative. FireSafe and the FireSafe logo are trademarks of CW Products. © 2013 CW Products.

Exclusively distributed in Australia by **CW Products**

13-23 Doecke Road Murray Bridge SA 5253

**Tel:** +61 8 8341 0120 **Fax:** +61 8 8341 1750

**Web:** [www.cwproducts.com.au](http://www.cwproducts.com.au)



**BUSHFIRE  
RATED  
ROLLER  
SHUTTERS**

